

# OPERATING INSTRUCTIONS, PARTS LIST & USER MANUAL



**PE2 – 14" Core Cutting Saws**



## CORE CUTTING PROCEDURE

(ELECTRIC MOTOR)

(#PE2 - 14" CORE CUTTING SAW)

- A) MOUNT SAW BLADE SO IT TURNS IN DIRECTION OF ARROW.
- B) LOWER BLADE SO CUTTING EDGE IS BELOW THE OPEN SLOT IN THE CORE CUTTING BRACKET.
- C) TURN SAW SWITCH TO ON POSITION.
- D) TURN WATER ON BY TURNING VALVE IF DIRECT WATER SUPPLY IS USED. IF WATER PUMP IS USED, PUMP WILL START WHEN SAW MOTOR IS TURNED ON. (IF PUMP IS PLUGGED INTO SIDE OF 60 CYCLE MOTOR).
- E) PLACE CORE INTO CUTTING BRACKET AND PUSH CART THROUGH THE BLADE UNTIL CORE IS CUT COMPLETELY IN HALF.
- F) **CAUTION:** DO NOT ATTEMPT TO OVERFEED THE CORE THROUGH THE SAW BLADE, ESPECIALLY WHEN CUTTING HARD CORE. IF OVERFEEDING OCCURS, MOTOR WILL OVERHEAT AND POWER DOWN, AND MAY CAUSE THE WINDINGS TO BURN OUT.
- G) AT END OF DAY, CLEAN ALL CUTTINGS FROM SAW, PUMP AND HOSE.
- H) **WARNING:** ALWAYS MAKE SURE SAW IS CONNECTED TO A PROPERLY GROUNDED ELECTRICAL OUTLET. FAILURE TO COMPLY WITH THIS WARNING COULD RESULT IN SERIOUS BODILY INJURY.
- I) **CAUTION:** GOOD MOTOR PERFORMANCE IS DEPENDENT ON PROPER VOLTAGE. EXTENSION CORDS THAT ARE TOO LONG AND/OR SMALL REDUCE AVAILABLE VOLTAGE TO MOTOR UNDER LOAD. VOLTAGE AND AMPERAGE SHOULD BE TESTED AT THE MOTOR. USE EXTENSION CORDS NO SMALLER THAN INDICATED BELOW:

<u>MOTOR HP</u>	<u>12' CORD</u>
5 HP	230V #10/3
3HP	230V #12/3

- J) SINGLE PHASE 60 HERTZ MOTORS ARE EQUIPPED WITH MANUAL RESET OVERLOADS. WHEN OVERLOAD TRIPS TURN SWITCH TO OFF POSITION AND **ALLOW 30 MINUTES TO COOL**. PUSH THE RESET BUTTON AND TURN SWITCH TO ON.
- K) A 40 AMP CIRCUIT SHOULD BE DESIGNATED SOLELY FOR THE SAW.

**IF THE MOTOR DOES NOT GET ENOUGH AMPS, IT WILL EVENTUALLY BURN UP THE START WINDINGS AND FAIL.**



## **APPLICATION CHART FOR CORE CUTTING BLADES**

### **MODEL #VHC24 SEGMENTED**

USED FOR CUTTING VERY HARD CORE, SUCH AS CHERT, JASPERITE, QUARTZITE, HARD GRANITES, ETC. IF YOU USE THIS BLADE FOR CUTTING SOFTER CORE, IT MAY WEAR OUT PREMATURELY.

### **MODEL #HC44 SEGMENTED OR #CCRB14P CONTINUOUS RIM**

USED FOR CUTTING HARD CORE, SUCH AS RHYOLITE, GRANITE, SILICIFIED VOLCANICS, ETC. IF YOU USE THIS BLADE FOR CUTTING SOFTER / ABRASIVE CORE, IT MAY WEAR OUT PREMATURELY.

### **MODEL #CC34 SEGMENTED (#SCQ14) OR #CCRB14 CONTINUOUS RIM**

USED FOR CUTTING REGULAR CORE SUCH AS BASALT, DIORITE, DIABASE, GABRO, DOLOMITE, WEATHERED GRANITE, SERPENTINE, AND PERIDOTITE. IF YOU USE THIS BLADE FOR CUTTING SOFTER/ABRASIVE CORE, IT MAY WEAR OUT PREMATURELY. IF YOU USE THIS BLADE FOR HARDER CORE, IT MAY GO DULL AND NOT WANT TO CUT.

### **MODEL SC54 SEGMENTED**

USED FOR CUTTING SOFT/ABRASIVE CORE SUCH AS CONGLOMERATES, SHALES, LIMESTONE, SILICA AND SULPHIDES. IF YOU USE THIS BLADE FOR CUTTING HARDER CORE, IT MAY GO DULL AND NOT WANT TO CUT.

### **NOTE:**

**ENSURE BLADES ARE MOUNTED ON SAW SO THEY TURN IN THE CORRECT DIRECTION.**

### **CAUTION:**

**WHEN SAWING, EASE CORE INTO BLADE, AFTER CONTACT HAS BEEN MADE, THEN APPLY PRESSURE.**

**ENSURE THAT CORE IS SECURED SO AS NOT TO MOVE WHILE BEING CUT. IF CORE MOVES AND BLADE IS BENT SIDEWAYS, LOSS OF SEGMENTS COULD OCCUR.**

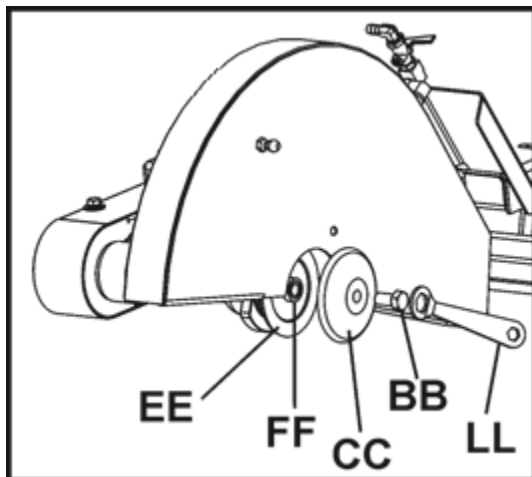
## OPERATION

### Fitting the Blade:

- The blade rotates in a “down-cut” direction. This means that the front of the blade is moving downward while the rear of the blade is moving upward.
  - Mount the Blade (DD) so that arrow on blade rotates in this “down-cut” direction. Blade (DD) can be installed / removed by using the /" (9 mm) end of the Wrench (LL) provided.
1. Using the Wrench (LL) provided (or one of your own) loosen the Cap screw (BB) by turning it Counterclockwise.
  2. Remove the outer Flange (CC). Make sure Outer Flange (CC), Inner Flange (EE), and Arbor (FF) are clean and not damaged.
  3. Mount Blade (DD) to arbor. Install Outer Flange (CC). Install and tighten Cap screw (BB) by turning it in a Clockwise direction (Right Hand Thread). Use Wrench (LL) to firmly tighten the Cap screw (BB) to arbor shaft.
  4. The blade should be lined up in the middle of the blade guard, if not you can adjust it by loosening the set screws on the bearings underneath the switch mounting plate.
  5. Loosen the screws and tap the blade shaft whatever way is needed to ensure the blade is in the middle.
  6. After mounting the Blade (DD), it should align in the middle of the core cutting cradle front-to-back. If adjustments are required, the core cradle can be loosened and lined up with the blade to ensure straight cuts.

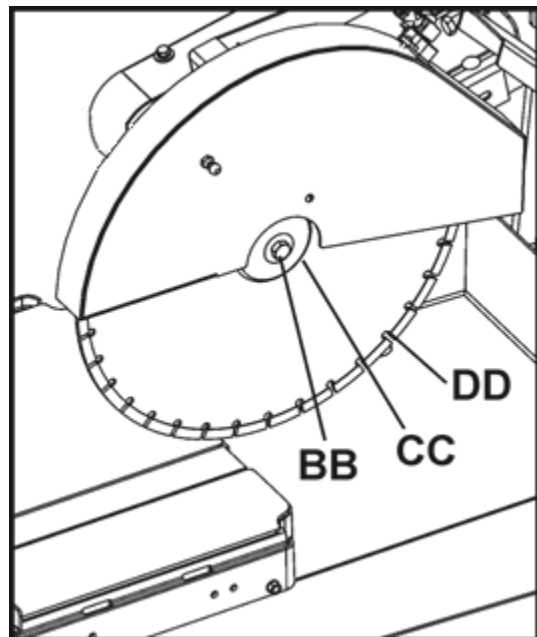
### WARNING!

- Pothier “Wet” diamond blades MUST be used with water!
- If cutting without water, use only diamond blades that are intended to be used dry (without water).
- DO NOT use Abrasive Blades WITH water!
- Always use respiratory protection when dry sawing!



### NOTICE

Note that Blade Shaft Cap screw (BB) has RIGHT HAND THREADS. Installation of the wrong cap screw could damage the blade shaft!



## OPERATION

### Start / STOP of Machine:

- Start the electric motor by turning the Power Switch (RR) To the "ON" position.
- Open the Water Valve (T) fully, and check the water flow before cutting.
- Cut the material using one of the Cutting Methods described In the above section.

#### **WARNING!**

Keep hands clear of rotating blade during operation!  
READ ALL SAFETY WARNINGS before operating  
This machine!



### Stopping the Machine:

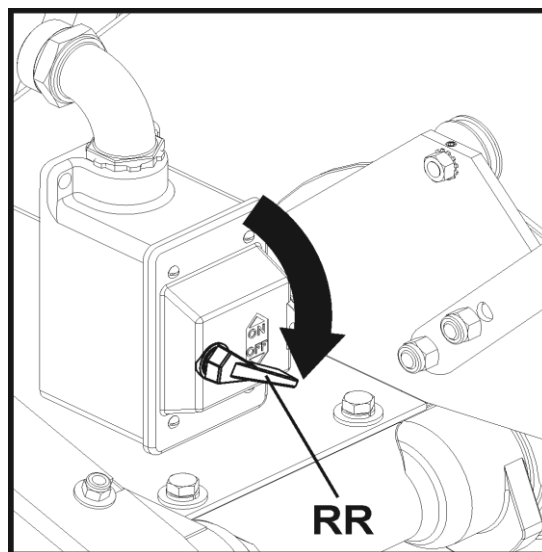
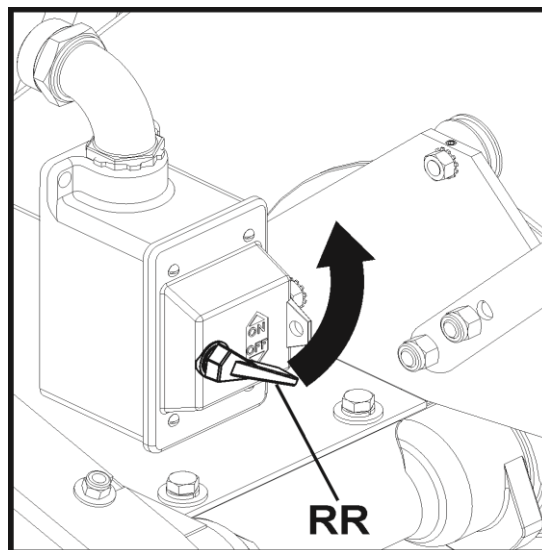
Stop machine by turning Power Switch (RR)

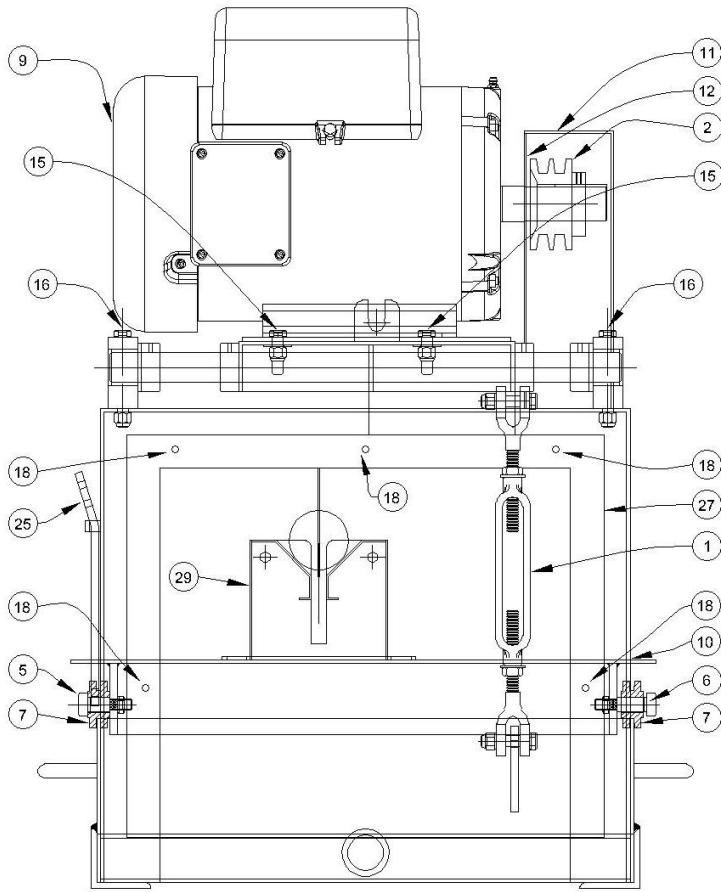
#### **WARNING!**

ALWAYS set POWER Switch (RR) to OFF position  
BEFORE connecting to power source! Electric motor  
Will run IF Power Switch (RR) is in ON position.

#### **WARNING!**

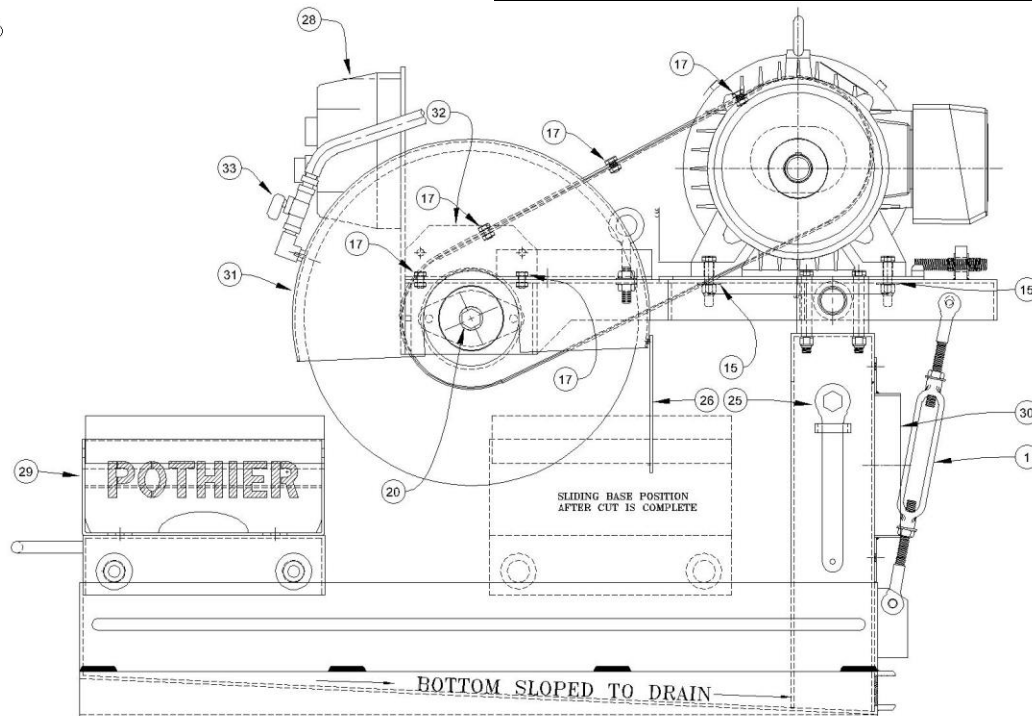
STOP Machine, and Wait for all blade movement to stop  
Before removing material from machine!



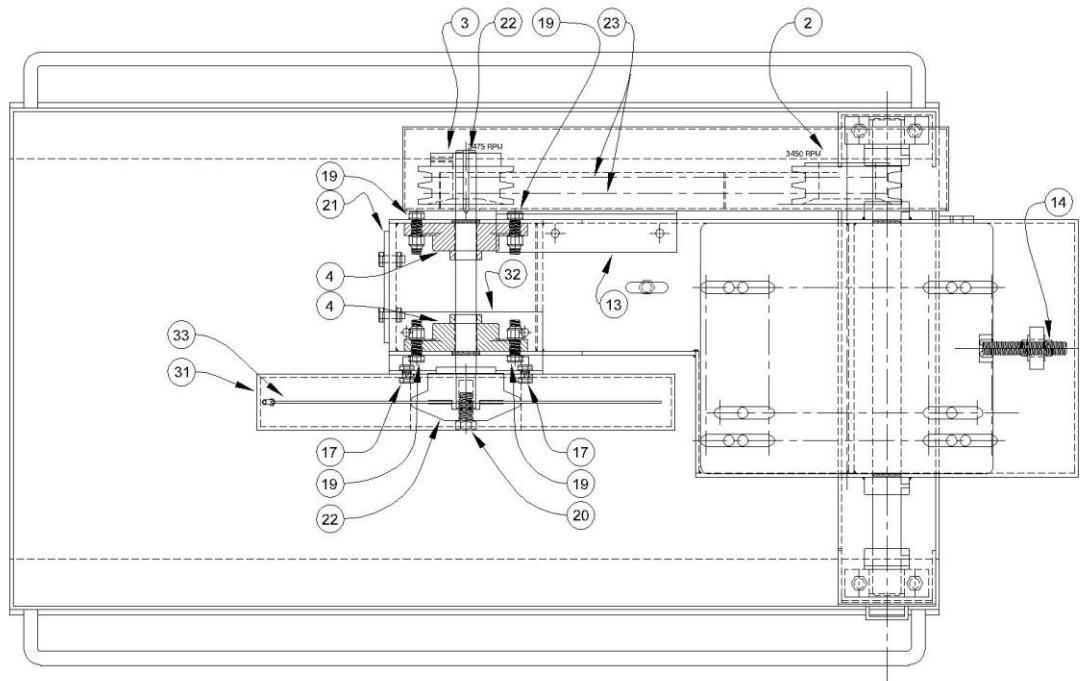


**REAR VIEW**

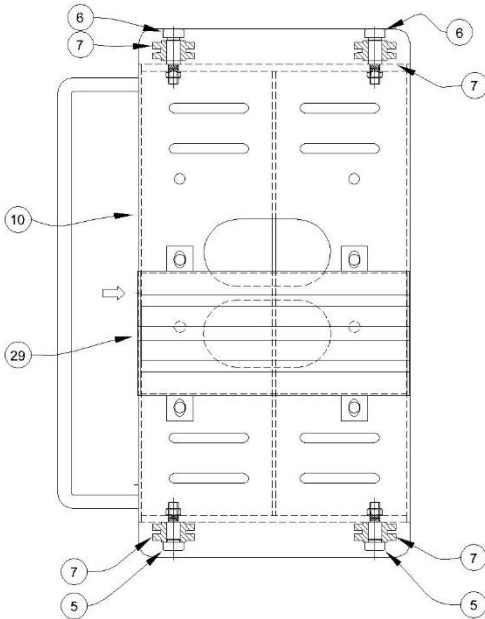
ITEM	QTY	PART NO	DESCRIPTION
1	1	PS00100	TURNBUCKLE
2	1	PS00101	SHEAVE 4.25 In O.D. DOUBLE PULLEY
5	2	PS00108	SHOULDER BOLT, 3/4" LONG SHOULDER LENGTH
6	2	PS00109	SHOULDER BOLT, 1" LONG SHOULDER LENGTH
7	4	PS00111	CART WHEEL ASSEMBLY c/w 3/8" JAMB NUT
9	1	PS00113-1	Electric MOTOR: 3 HP 3450, 208-230/1/60
9	1	PS00113-2	Electric MOTOR: 3 HP 3450, 230-460/3/60
9	1	PS00113-3	Electric MOTOR: 5 HP 3450, 208-230/1/60
9	1	PS00113-4	Electric MOTOR: 5 HP 3450, 230-460/3/60
10	1	PS00116	CORE CUTTING CART
11	1	PS00117	BELT GUARD COVER
12	1	PS00118	BELT GUARD MOUNT
15	4	PS00122	BOLT – 3/8" – 16 x 1-1/4" Long c/w Lock Washers and Nuts
16	4	PS00122-1	BOLT – 3/8" – 16 x 3-1/4" Long c/w Lock Washers and Nuts
17	11	PS00123	BOLT – 1/4" – 20 x 3/4" Long c/w Lock Washers and Nuts
18	5		BOLT – 5/16" – 20 x 1" Long c/w Lock Washers and Nuts
20	1	PS00126	ARBOR BLADE BOLT – 1/2" – 20 NF X 1" (BOLT ONLY)
25	1	PS00133	WRENCH
26	1	PS00134	BLADE RUBBER SPLASH GUARD – 5"
27	1	PS00135	REAR RUBBER SPLASH GUARD
28	1	PS00135-1	STARTER SWITCH BOX, 3 HP 3450, 208-230/1/60
28	1	PS00135-2	STARTER SWITCH BOX, 3 HP 3450, 230-460/3/60
28	1	PS00135-3	STARTER SWITCH BOX, 5 HP 3450, 208-230/1/60
28	1	PS00135-4	STARTER SWITCH BOX, 5 HP 3450, 230-460/3/60
29	1	073106	STAINLESS STEEL CORE COLLECTION CRADLE – 10"
30	1	PS00136E	OPTION – EXTRACTION PORT
31	1	PS00138	BLADE GUARD
32	1	PS00139	BLADE GUARD MOUNT
33	1	PS00140	WATER CONNECTION KIT WITH SHUT-OFF VALVE



**SIDE VIEW**



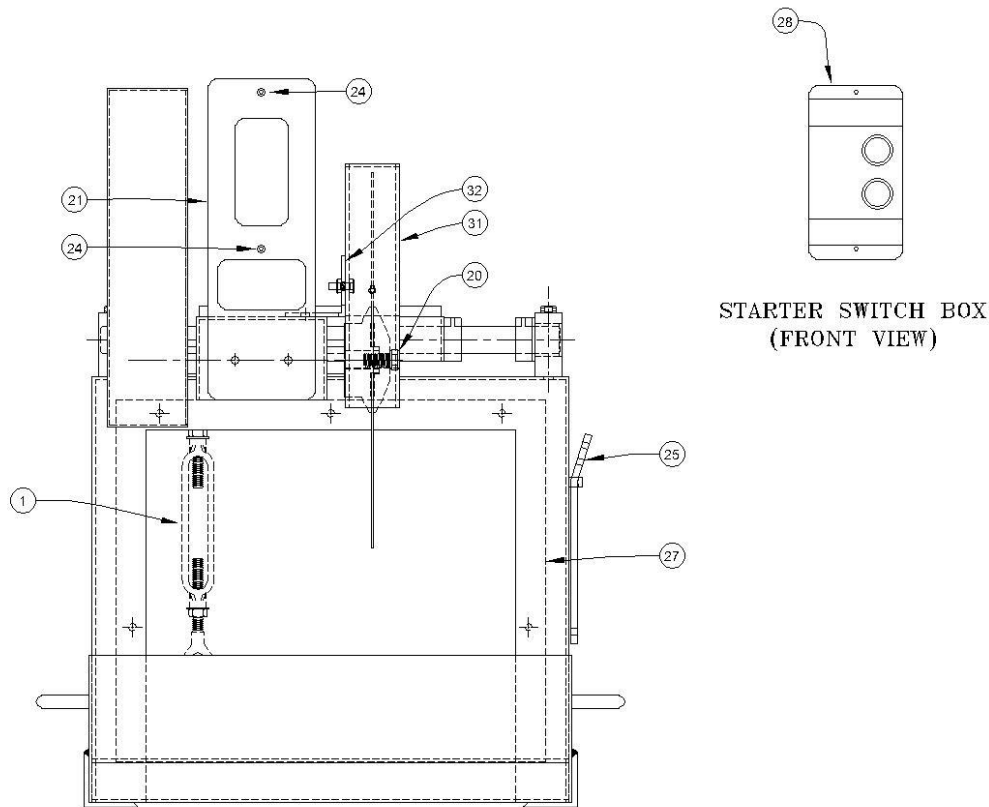
**TOP VIEW - MOTOR & CART REMOVED**



**TOP VIEW - CORE CUTTING CART**

ITEM	QTY	PART NO	DESCRIPTION
2	1	PS00101	SHEAVE 4.25 In O.D. DOUBLE PULLEY
3	1	PS00102	SHEAVE 3.05 In O.D. DOUBLE PULLEY
4	2	PS00103	FLANGE BEARING WITH SETSCREW
5	2	PS00108	SHOULDER BOLT, 3/4" LONG SHOULDER LENGTH
6	2	PS00109	SHOULDER BOLT, 1" LONG SHOULDER LENGTH
7	4	PS00111	CART WHEEL ASSEMBLY c/w 3/8" JAMB NUT
8	1		CART ASSEMBLY (COMPLETE)
10	1	PS00116	CORE CUTTING CART
13	1	PS00119	BELT GUARD MOUNT BRACKET
14	2	PS00121	1/2" JAMB NUT, N.F c/w 1/2" FLAT WASHER
17	11	PS00123	BOLT – 1/4" – 20 x 3/4" Long c/w Lock Washers and Nuts
19	4	PS00125	BOLT – 5/16" – 18 x 1-1/4" c/w NUT – NYLOC 5/16"
20	1	PS00126	ARBOUR BLADE BOLT – 1/2" – 20 NF X 1" (BOLT ONLY)
21	1	PS00128	STARTER MOUNTING PLATE
22	1	PS00129	BLADE SHAFT ASSEMBLY c/w INNER&OUTER FLANGE AND BOLT
23	2	PS00130	V-BELT
29	1	073106	STAINLESS STEEL CORE COLLECTION CRADLE – 10"
31	1	PS00138	BLADE GUARD
32	1	PS00139	BLADE GUARD MOUNT
33	1	PS00140	WATER CONNECTION KIT WITH SHUT-OFF VALVE
34	1		3/8 X 6FT CLEAR VINYL HOSE
35	1		WATER SWIVEL, 3/8" HOSE BARB c/w CLAMP
36	1		WATER PUMP, G325C

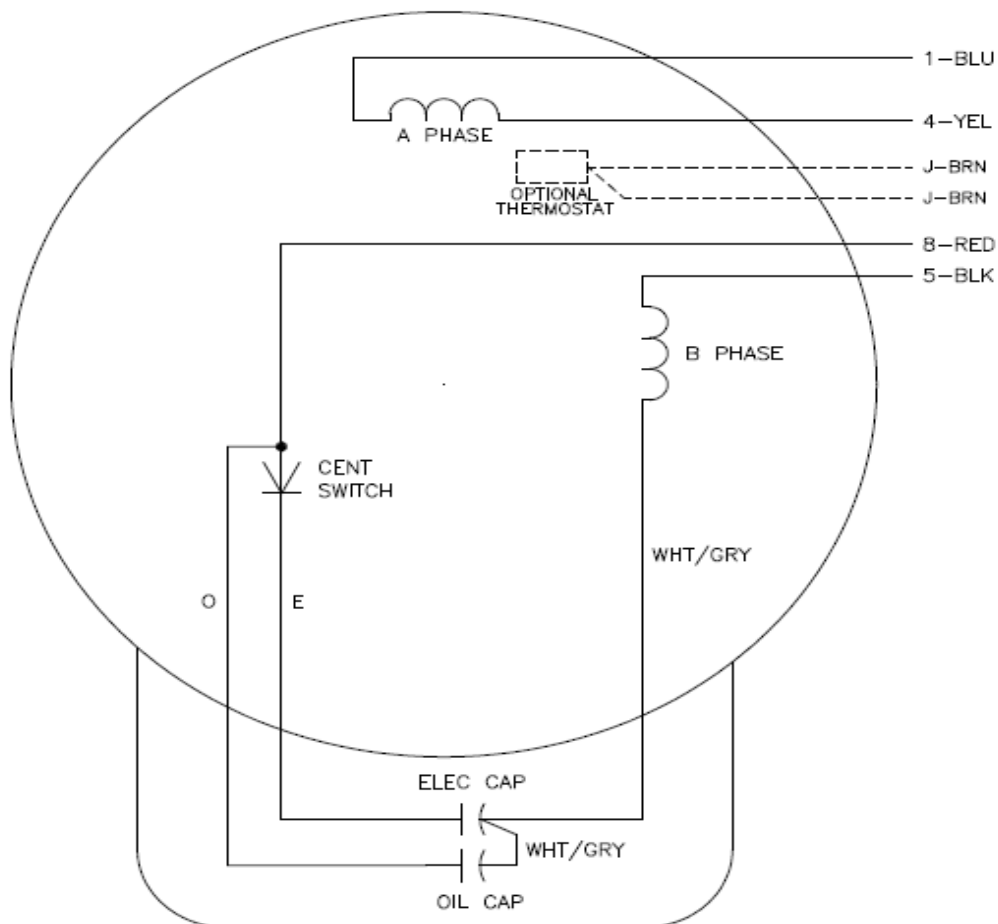
ITEM	QTY	PART NO	DESCRIPTION
1	1	PS00100	TURNBUCKLE
20	1	PS00126	ARBOUR BLADE BOLT – ½" – 20 NF X 1" (BOLT ONLY)
21	1	PS00128	STARTER MOUNTING PLATE
24	2	PS00131	HEX SOCKET HEAD CAP SCREW BOLT
25	1	PS00133	WRENCH
27	1	PS00135	REAR RUBBER SPLASH GUARD
28	1	PS00135-1	STARTER SWITCH BOX, 3 HP 3450, 208-230/1/60
28	1	PS00135-2	STARTER SWITCH BOX, 3 HP 3450, 230-460/3/60
28	1	PS00135-3	STARTER SWITCH BOX, 5 HP 3450, 208-230/1/60
28	1	PS00135-4	STARTER SWITCH BOX, 5 HP 3450, 230-460/3/60
31	1	PS00138	BLADE GUARD
32	1	PS00139	BLADE GUARD MOUNT



**FRONT VIEW - MOTOR, CART & POWER SWITCH BOX REMOVED**



CD0017A02



	LINE A	LINE B
STD	1,8	4,5
OPP	1,5	4,8

NOTES:

1. STANDARD ROTATION IS CCW FACING END OPPOSITE SHAFT EXTENSION.
2. OPTIONAL THERMOSTAT IS PROVIDED WHEN SPECIFIED.
3. MULTIPLE CAPACITORS ARE CONNECTED IN PARALLEL UNLESS OTHERWISE SPECIFIED.
4. LEAD COLORS ARE OPTIONAL. LEADS MUST ALWAYS BE NUMBERED AS SHOWN.

REV. DESC: REVISE TO SHOW OPTIONAL COLORS

REV. LTR: B BY: JLP REVISED: 04/09/99 11:30 TDR: 0178636

CD0017A02

FILE: AAA00007514

MDL: -

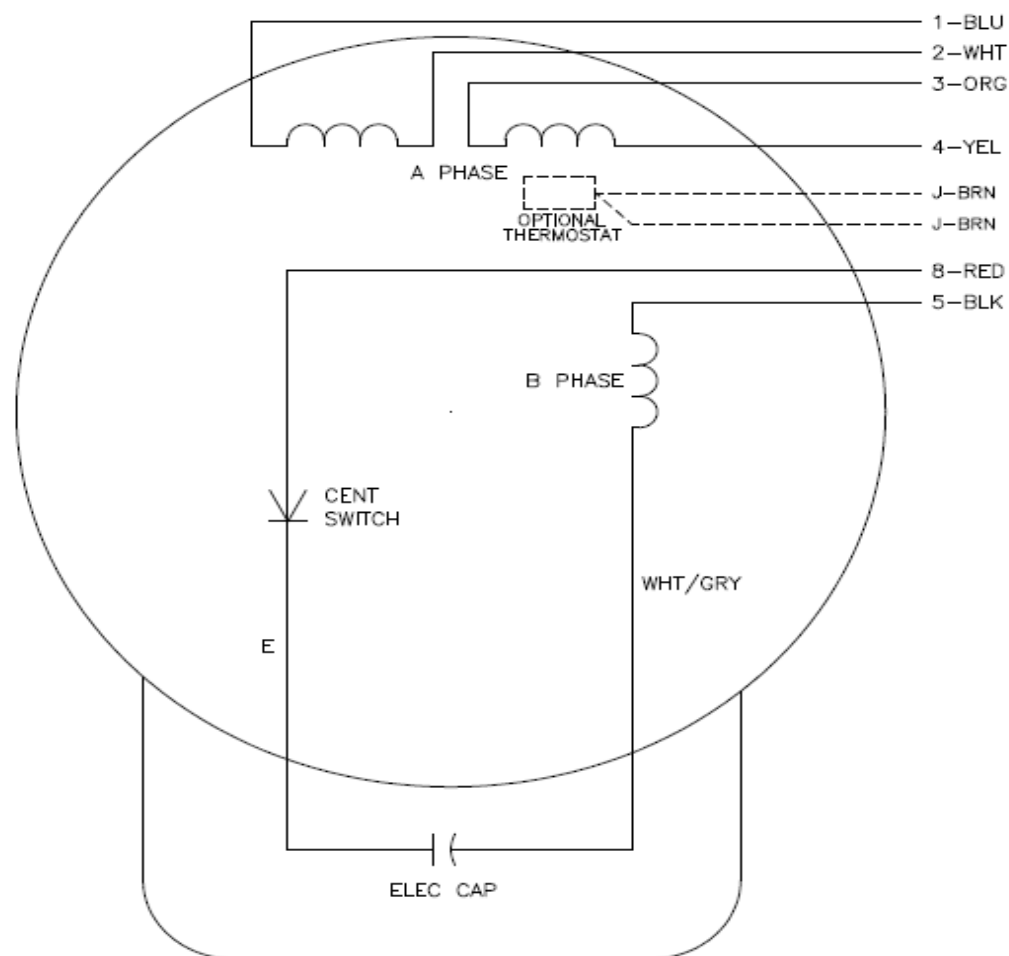
MTL: -

**BALDOR ELECTRIC Co.**

TYPE LC, SV, REV, 4 LEADS

CD0017A02

CD0001



	LINE A	LINE B	JOIN
HIGH STD	1	4,5	2,3,8
HIGH OPP	1	4,8	2,3,5
LOW STD	1,3,8	2,4,5	—
LOW OPP	1,3,5	2,4,8	—

NOTES:

1. STANDARD ROTATION IS CCW FACING END OPPOSITE SHAFT EXTENSION.
2. OPTIONAL THERMOSTAT IS PROVIDED WHEN SPECIFIED.
3. MULTIPLE CAPACITORS ARE CONNECTED IN PARALLEL UNLESS OTHERWISE SPECIFIED.
4. LEAD COLORS ARE OPTIONAL. LEADS MUST ALWAYS BE NUMBERED AS SHOWN.

REV. DESC: REVISE TO SHOW OPTIONAL COLORS

REV. LTR: D BY: JLP REVISED: 04/08/99 1:16 TDR: 0178636

100000

FILE: AAA00007405

MDL: —




MTL: —

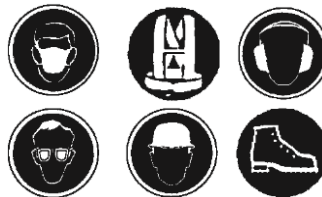
**BALDOR ELECTRIC Co.**

TYPE L, DV, REV, 6 LEADS

CD0001

## SAFETY INSTRUCTIONS


 <b>WARNING!</b>	
 	Before starting up the machine make sure you completely read these instructions. Be familiar with operation of the machine before operation!




The operator must wear protective clothing appropriate to the work he is doing.


	<b>MANDATORY</b>		<b>INDICATION INFORMATION INSTRUCTION</b>
--	------------------	---	---


	<b>WARNING</b>		<b>PROHIBITION</b>
--	----------------	---	--------------------


	Before leaving our factory, every machine is thoroughly tested.
---	---


Follow our instructions strictly and your machine will you long service in normal operating conditions.

	Any person not involved in the work should leave the area.
---	--

	The working area must be completely clear, well lit and all safety hazards removed.
--	---

	Any persons not involved in the work, should leave the area.
---	--

 <b>WARNING!</b>
Always make sure the saw is connected to a properly grounded electrical outlet. Failure to comply with this warning could result in serious bodily injury or death!

 <b>WARNING!</b>
<p>Use ONLY Reinforced Abrasive Blades or Diamond Blades with this machine.</p> <p>Use ONLY blades marked with a maximum operating speed greater than the blade shaft speed.</p> <p>DO NOT use carbide tipped, wood cutting, or circular saw blades with this machine.</p> <p>Conventional "Wet" diamond blades MUST be used with water.</p> <p>DO NOT use conventional "Wet" diamond blades without water. Using conventional "wet" diamond blades without water can result in injury or death of the operator or persons in the work area!</p> <p>Before performing any maintenance, ALWAYS locate the machine on a level surface with the engine / motor OFF and the start switch in the OFF position, and the power source disconnected.</p>

---

## SAFETY INSTRUCTIONS

---

### **WARNING!**

#### **HEARING HAZARD!**

DURING NORMAL USE OF THIS MACHINE,  
OPERATOR MAY BE EXPOSED TO A NOISE  
LEVEL EQUAL OR SUPERIOR TO **85 dB (A)**

### **DUST WARNING!**

Cutting, especially when DRY cutting, generates dust that comes from the material being cut, which frequently contains silica. Silica is a basic component of sand, quartz, brick clay, granite and numerous other minerals and rocks. Exposure to excessive amount of such dust can cause:

- Respiratory diseases (affecting your ability to breath), including chronic bronchitis, silicosis, and pulmonary fibrosis from exposure to silica. These diseases may be fatal.
- Skin irritation and rash; and
- Cancer according to NTP\* and IARC\*

\* National Toxicology Program, International Agency for Research on Cancer

Take precautionary steps.

- Avoid inhalation of and skin contact with dust, mist, and fumes.
- Wet cut when feasible, to minimize dust.

Wear and ensure that all bystanders wear appropriate respiratory protection such as dust masks designed to filter out microscopic particles. (See OSHA 29 CFR Part 1910.1200)

## SAFETY FIRST!



### WARNINGS DO's AND DO NOT's



**WARNING: FAILURE TO COMPLY WITH THESE WARNINGS AND OPERATING INSTRUCTIONS COULD RESULT IN DEATH OR SERIOUS BODILY INJURY.**

	DO
DO	read this entire operator's manual before operating this machine. Understand all warnings, instructions, and controls.
DO	keep all guards in place in good condition.
DO	wear safety approved hearing, eye, head and respiratory protection.
DO	read and understand all warnings and instructions on the machine.
DO	read and understand the symbol definitions contained in this manual
DO	keep all parts of your body away from the blade and all other moving parts.
DO	know how to stop the machine quickly in case of emergency.
DO	shut off the engine and allow it to cool before refueling.
DO	inspect the blade, flanges, and shafts for damage before installing the blade.
DO	use only Pothier diamond blades manufactured for use on core cutting saws.
DO	use only blades marked with a maximum operating speed greater than the blade shaft speed. Verify speed by checking blade shaft rpm and pulley diameters and blade flange diameters.
DO	verify saw drive configuration by checking blade shaft RPM, pulley diameters, and blade flange diameter.
DO	read all safety materials and instructions that accompany any blade used with this machine.
DO	inspect each blade carefully before using it. If there are any signs of damage or unusual wear, <b>DO NOT USE THE BLADE.</b>
DO	mount the bladesolidly and firmly wrench tighten the arbor nut.
DO	make sure the blade and flanges are clean and free of dirt and debris before mounting the blade on the saw.
DO	use wet cutting diamond blades with a 1" (diameter arbor only). Never use damaged or worn blade flanges.
DO	use the correct blade for the type of work being done. Check with blade manufacturer if you do not know if blade is correct.
DO	operate this machine only in well ventilated areas.
DO	instruct bystanders on where to stand while the machine is in operation.
DO	establish a training program for all operators of this machine.
DO	clear the work area of unnecessary people. Never allow anyone to stand in front of or behind the blade while the engine is running.
DO	make sure the blade is not contacting anything before starting the engine.
DO	always tie down the machine when transporting.
DO	use caution and follow instructions when setting up or transporting the machine.
DO	have all service performed by competent service personnel.
DO	verify the blade arbor hole matches the machine spindle before mounting the blade.
DO	make sure the gas caps of the machine and the fuel can are properly tightened before starting the engine. Move fuel can at least 10 feet from machine after fueling.

## SAFETY FIRST!



**WARNING: FAILURE TO COMPLY WITH THESE WARNINGS AND OPERATING INSTRUCTIONS COULD RESULT IN DEATH OR SERIOUS BODILY INJURY.**

	DO	
DO	clean the machine after each day's use.	
DO	remove adjusting keys and wrenches from tool before turning it on.	
DO	keep the handles dry, clean and free of oil and dirt.	
DO	carefully maintain and clean for better and safer performance. Follow instructions for changing accessories. Inspect tool cords periodically and, if damaged, have repaired by authorized service facility.	
DO	Use the proper blade flange size for each blade size. Never use damaged or worn blade flanges.	
DO	use caution when handling fuel.	
DO	only cut in a straight line.	
DO	Make sure electric powered machines are plugged into a properly grounded circuit	
DO	make sure power cords are the proper size and in good condition.	
DO	follow all electrical codes in your area	
DO	use correct voltage and proper extension cords. Never carry tool by cord or yank it to disconnect it from receptacle. Keep cord away from heat, oil and sharp edges.	
DO	disconnect tools from power source when not in use, before servicing and, when changing accessories.	
DO	carefully maintain and clean for better and safer performance. Follow instructions for changing accessories.	
DO	inspect tool cards periodically and, if damaged, have repaired by authorized service facility.	
DO	Always give a copy of this manuals to the equipment user. For extra copies, call (604) 946-3811.	

## SAFETY FIRST!



**WARNING: FAILURE TO COMPLY WITH THESE WARNINGS AND OPERATING INSTRUCTIONS COULD RESULT IN DEATH OR SERIOUS BODILY INJURY.**

DO NOT	
DO NOT	operate this machine unless you have read and understood this operator's manual.
DO NOT	operate this machine without the blade guard, or other protective guards in place.
DO NOT	leave this machine unattended while the engine is running.
DO NOT	work on this machine while the engine is running.
DO NOT	operate this machine when you are tired or fatigued.
DO NOT	use a wet blade without adequate water supply to the blade.
DO NOT	exceed maximum blade speed shown for each blade size. Excessive speed could result in blade breakage.
DO NOT	operate the machine if you are uncertain of how to run the machine.
DO NOT	use damaged equipment or blades.
DO NOT	touch or try to stop a moving blade with your hand
DO NOT	cock, jam, wedge or twist the blade in a cut.
DO NOT	transport a cutting machine with the blade mounted on the machine.
DO NOT	use a blade that has been dropped or damaged.
DO NOT	use carbide tipped blades.
DO NOT	lay power cords in or near water.
DO NOT	replace the motor with any motor that does not have a special grounding connection.
DO NOT	use segmented diamond blades without water unless specifically designed for dry cutting.
DO NOT	touch a dry cutting diamond blade immediately after use. These blades require several minutes to cool after each cut.
DO NOT	Use damaged or worn blade flanges.
DO NOT	allow other persons to be near the machine when starting, refueling, or when the machine is in operation.
DO NOT	operate this machine in an enclosed area unless it is properly vented.
DO NOT	operate this machine in the vicinity of anything that is flammable. Sparks could cause a fire or an explosion.
DO NOT	allow blade exposure from the guard to be more than 80 degrees.
DO NOT	operate this machine with the belt guard or blade guard removed.
DO NOT	operate this machine unless you are specifically trained to do so.
DO NOT	use a blade that has been over heated (Core has a bluish color).
DO NOT	jam material into the blade.
DO NOT	grind on the side of the blade.
DO NOT	start cutting with a saw until you have a clear work area and secure footing.
DO NOT	operate this machine while under the influence of drugs or alcohol.

**BALDOR®**

*For Warranty Information  
on your Baldor motor or  
for the nearest service  
center please go to:*

[www.emotorsdirect.ca/warranty](http://www.emotorsdirect.ca/warranty)





## Pothier Enterprises Ltd. New Equipment Warranty

*Except as noted below, Pothier Enterprises Ltd. warrants that its new equipment will be free from manufacturing defects for a period of 1 year from the date of purchase by the original consumer purchaser.*

The above warranty is subject to the following exceptions:

1. To the extent the following components are part of any of the new equipment, Pothier Enterprises' warranty on the component parts is limited to the manufacturer's warranty period as set out below:

Electric Motors		Water Pumps	
Manufacturer .....	Warranty Period	Manufacturer .....	Warranty Period
Baldor .....	1 Year	Beckett .....	1 Year
Leeson.....	1 Year		

2. Pothier Enterprises Ltd.'s obligation under this warranty is expressly limited to the replacement or repair at Pothier Enterprises Ltd. in Surrey, BC or at a service facility designated by Pothier Enterprises Ltd., of such part or parts as inspection shall disclose to have been defective. This warranty does not cover labour or maintenance items such as belts, filters, bearings and wheels. Purchaser is responsible for paying shipping costs to and from the location where the equipment is to be repaired or replaced. Motors and engines are to be serviced by the nearest authorized service centre, as designated by the manufacturer of the engine/motor. **Under no circumstances will Pothier Enterprises Ltd. be responsible for incidental or consequential damages.**
3. Pothier Enterprises Ltd.'s warranty does not apply to defects caused by damage, abuse, modifications, low voltage, acts of God, unreasonable use, faulty repairs made by others or defects caused by failure to provide reasonable maintenance. All warranties are void if the equipment or any of its components are altered or modified by the purchasers, or if the product is used in a manner or with a blade not recommended by the manufacturer.
4. The foregoing express warranties are in lieu of all other warranties. POTHIER ENTERPRISES LTD. EXPRESSLY DISCLAIMS ALL OTHER WARRANTIES, INCLUDING, WITHOUT LIMITATION, THE IMPLIED WARRANTIES OF MERCHANTABILITY AND FITNESS FOR A PARTICULAR PURPOSE.

*FILL OUT CARD BELOW, CUT ON THE LINE, AND MAIL WITH COPY OF PROOF OF PURCHASE*

---

### Warranty – Registration Card

Description: \_\_\_\_\_

Model: \_\_\_\_\_ Serial Number: \_\_\_\_\_

Motor Model No: \_\_\_\_\_ Horsepower: \_\_\_\_\_

Brand of Motor: \_\_\_\_\_ Motor Serial Number: \_\_\_\_\_

Purchased From (Company): \_\_\_\_\_

Address: \_\_\_\_\_ Prov/State: \_\_\_\_\_

Purchasing Co: \_\_\_\_\_ Date Purchased: \_\_\_\_\_

Street: \_\_\_\_\_

City: \_\_\_\_\_ Prov/State: \_\_\_\_\_ Postal/Zip Code: \_\_\_\_\_ Country: \_\_\_\_\_

Your Name: \_\_\_\_\_ Title: \_\_\_\_\_

Type of Business: \_\_\_\_\_